

October 31, 2017

New Spill Response Base Planned in Port Alberni

Construction Activities - Update

Western Canada Marine Response Corporation (WCMRC) is planning to construct a new spill response base in Port Alberni. The base is part of a larger expansion planned to meet enhanced response requirements associated with the Trans Mountain Expansion Project. This larger expansion will double WCMRC's capacity to respond to spills and cut mandated response times in half in South Coast waters.

As a part of the larger expansion, a number of new bases will be constructed, the majority of which will be located on Vancouver Island. WCMRC is planning to construct new response bases in Port Alberni and Ucluelet. The base in Port Alberni will work in tandem with the base in Ucluelet, with Port Alberni being the main base of the two. The Port Alberni base will be located near the port authority's office and will include vessel moorage and a pre-engineered steel structure, including office and warehouse space as well as a new spill response vessel "pocket marina" located in the water adjacent to Water Street Wharf.

We will work closely with the Port Alberni Port Authority throughout the project.

In preparation for the new base in Port Alberni, groundworks have begun on the new base location within the Port Authority's terminal yard. Additionally, we need to start preparations at Water Street Wharf.

What work will be taking place?

- Removal and demolition of the existing paved surface to expose laminated decking
- Removal and replacement of laminated areas
- Replacement of beams, piling tops and cross bracing where necessary
- Remove the "triangle" area at south end of the dock
- Remove and replacement of timber transition retaining wall with concrete lock blocks
- Deck the pier with new timber

We have hired Bowerman Excavating Ltd., a local excavating contractor, to complete this work.

When will the work start?

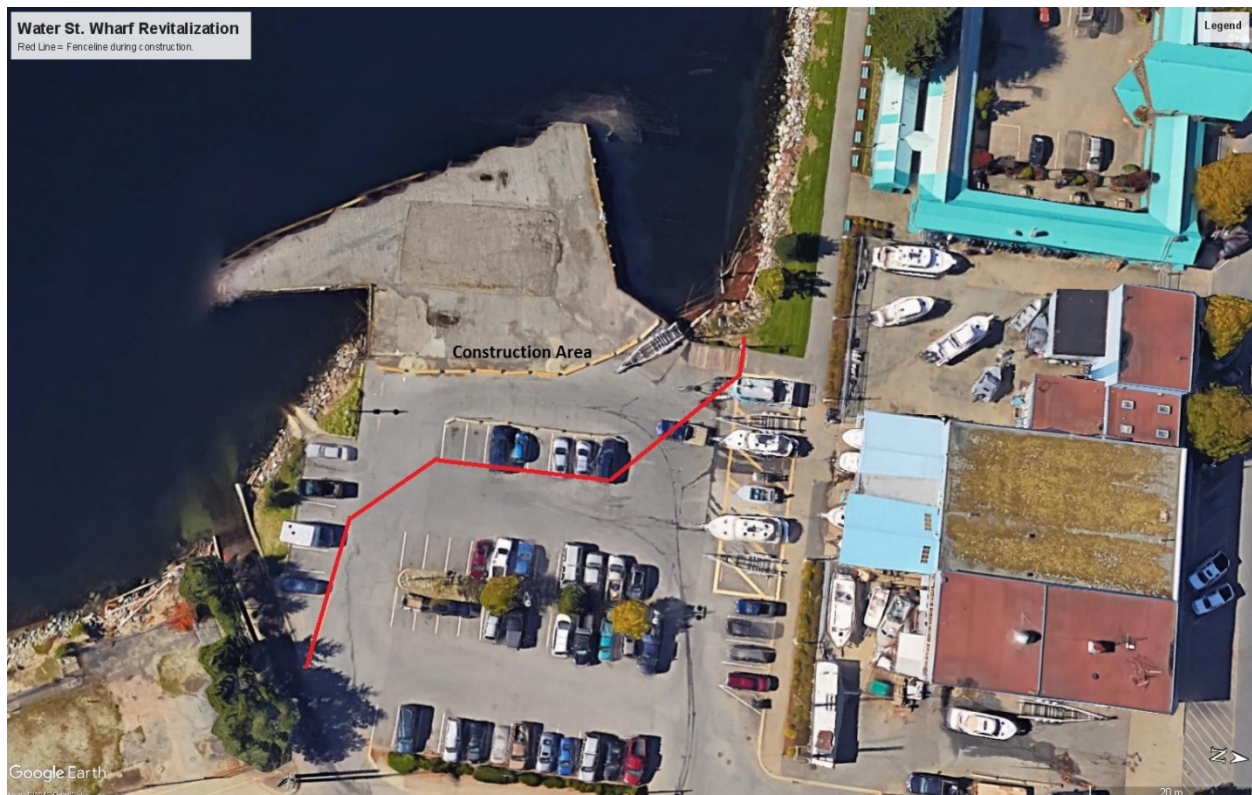
Site preparation and work will begin immediately

Where is this happening?

The Water Street Wharf work is located on the existing pier immediately adjacent to north and east of the red area in the map, below.



The impacted Construction Area is located above the red line approximation area in the map, below.





206 - 3500 Gilmore Way, Burnaby, B.C. V5G 0B8
T 604-294-6001 | www.wcmrc.com

How will this impact me?

There will be a temporary impact of the loss of full access to this construction area that may indirectly impact Harbour Quay businesses and the public who may use this area for parking.

If you have any feedback, questions or would like more information, please send them to comments@wcmrc.com. We'll continue to keep you informed as this project moves forward.

Sincerely,
Michael Lowry
Communications Manager